



NOUVELLES FAÇADES  
NEUE AUDI terminal FASSADE  
POUR terminal AUDI  
NEW AUDI terminal FACADE  
NIEUWE AUDI terminal-GEVELBEKLEDING



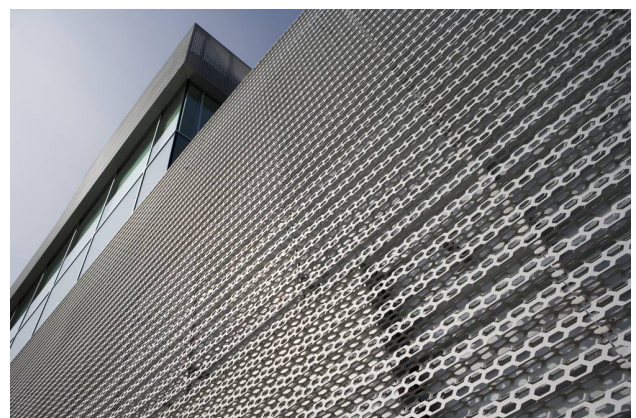
## New AUDI terminal facades – Project information

In the next few years, AUDI car dealerships shall have a new homogeneous appearance throughout the whole world: the AUDI terminal – a facade of perforated, bent and anodised aluminium sheets. It is a hexagonal honeycomb perforation uniting both aesthetics and dynamics.



DF is one of Europe's leading manufacturers of perforated plates and sheets with more than 350 employees in the Group (for more information on the company, please visit [www.dfgb.de](http://www.dfgb.de)). For more than 100 years, DF has been working in the field of perforated plates and sheets and their further processing.

Focus is also put on the manufacture of perforated sheets for complex facade projects of all kinds.



Mobile AUDI presentation centre



## Scope of delivery:

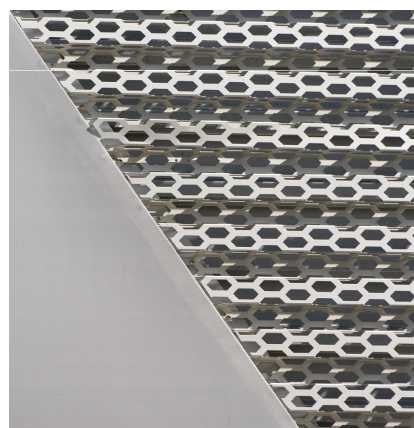
For the AUDI terminals, DF supplies **perforated, anodised aluminium sheets with folded edges** from one source. The manufacture strictly complies with the requirements established by AUDI.

Depending on the customer requirements, there are two delivery options of DF:

1. Delivery of **rectangular standard panels** which are cut to size by the cladding company on site
2. Delivery of all panels, incl. finished cuts, slopes as well as mitres for corner plates **ready for assembly**

Note: The cuts, curves, mitres etc. are made prior anodising so that all cutting edges are also anodised and thus protected against environmental influences in an optimal way.

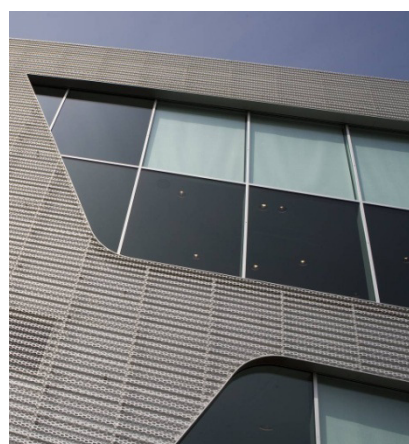
**It is the cladding company that finally decides on the execution.**



Pictures above: slopes with edging



Pictures left/centre:  
Corner pieces with mitre cuts and  
toothed blades as protection



Curves



**Samples of realised projects:  
(total 200 projects / appr. 150.000 m<sup>2</sup>)**

Up until now, DF has successfully delivered perforated sheets for the following AUDI terminal projects:

**Germany**

- AUDI Frankfurt (6600 m<sup>2</sup>)
- AUDI Berlin (5000 m<sup>2</sup>)
- AUDI Munich (2000 m<sup>2</sup>)
- AUDI Dresden (1000 m<sup>2</sup>)
- AUDI Mobile presentation center Davos
- AUDI Lichtenberg (1500 m<sup>2</sup>)
- AUDI Leipzig (840 m<sup>2</sup>)
- AUDI Gera (400 m<sup>2</sup>)
- AUDI Vechta (500 m<sup>2</sup>)
- AUDI Fürstenwald (560 m<sup>2</sup>)
- AUDI Weißensee (570 m<sup>2</sup>)
- AUDI Brass Dietzenbach (455 m<sup>2</sup>)
- AUDI Stuttgart (3600 m<sup>2</sup>)
- AUDI Fulda (700 m<sup>2</sup>)
- AUDI Füssen (700 m<sup>2</sup>)
- AUDI Neuburg (1000m<sup>2</sup>)
- AUDI Köln (950 m<sup>2</sup>)
- AUDI Eching (1400 m<sup>2</sup>)
- AUDI Magdeburg (350 m<sup>2</sup>)



AUDI Munich

**France**

- AUDI Limonest / Lyon (2100m<sup>2</sup>)
- AUDI Seynod / Annecy (1100m<sup>2</sup>)
- AUDI Ville la Grand (500 m<sup>2</sup>)
- AUDI Ferney Voltaire (470 m<sup>2</sup>)
- AUDI Dunkerque (430 m<sup>2</sup>)
- AUDI Tarbes (240 m<sup>2</sup>)
- AUDI Valence (470 m<sup>2</sup>)
- AUDI Laval (470 m<sup>2</sup>)
- AUDI Boulogne sur Mer (300 m<sup>2</sup>)
- AUDI Vannes (550 m<sup>2</sup>)
- AUDI Terville (280 m<sup>2</sup>)
- AUDI Trélissac (360 m<sup>2</sup>)
- AUDI Puget (430 m<sup>2</sup>)
- AUDI Vire (400 m<sup>2</sup>)
- AUDI Béziers (580 m<sup>2</sup>)
- AUDI Bayonne (300 m<sup>2</sup>)
- AUDI St. Brieuc (450 m<sup>2</sup>)
- AUDI Beaucouzé (650 m<sup>2</sup>)
- AUDI Nîmes (520 m<sup>2</sup>)
- AUDI Chalon sur Saône (300 m<sup>2</sup>)



Rear side



## **France** (follow up)

AUDI Cholet (350 m<sup>2</sup>)  
AUDI Bruay-sur-l'Escaut (700 m<sup>2</sup>)  
AUDI Brives-La-Gaillarde (500 m<sup>2</sup>)  
AUDI Pamiers (400 m<sup>2</sup>)  
AUDI Orvault (630 m<sup>2</sup>)  
AUDI Echirolles / Grenoble (450 m<sup>2</sup>)  
AUDI St. Victoret / Marseille (580 m<sup>2</sup>)  
AUDI Chenove (800 m<sup>2</sup>)  
AUDI Narbonne (300 m<sup>2</sup>)  
AUDI Toulon La Garde (1250 m<sup>2</sup>)  
AUDI Reims (570 m<sup>2</sup>)  
AUDI Bourgoin Jallieu (450 m<sup>2</sup>)  
AUDI Epinal (500 m<sup>2</sup>)  
AUDI Saint Maximin (600 m<sup>2</sup>)  
AUDI St Lo (450 m<sup>2</sup>)  
AUDI Jaux (320 m<sup>2</sup>)  
AUDI Le Coteau (200 m<sup>2</sup>)  
AUDI Mouilleron le Captif (425 m<sup>2</sup>)  
AUDI Nevers (220 m<sup>2</sup>)  
AUDI Trignac (510 m<sup>2</sup>)  
AUDI Lanester (780 m<sup>2</sup>)  
AUDI Carcassonne (300 m<sup>2</sup>)  
AUDI Mortefontaine (500 m<sup>2</sup>)  
AUDI Macon (300m<sup>2</sup>)  
AUDI Saint Priest en Jarez (850 m<sup>2</sup>)  
AUDI Saint Paul les Dax (450 m<sup>2</sup>)



## **Holland**

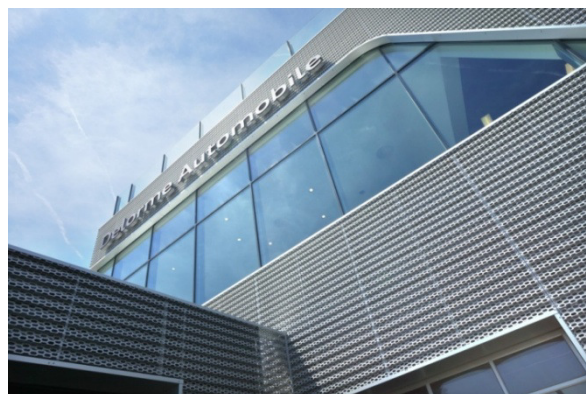
AUDI Eindhoven (700 m<sup>2</sup>)  
AUDI Kantsingel (150 m<sup>2</sup>)  
AUDI Gouda (800 m<sup>2</sup>)  
AUDI Dordrecht (65 m<sup>2</sup>)  
AUDI Leeuwarden (350 m<sup>2</sup>)  
AUDI Zeist (700 m<sup>2</sup>)

## **Belgium**

AUDI Kortenberg (800 m<sup>2</sup>)  
AUDI Lanklaar (560 m<sup>2</sup>)  
AUDI Heremans (120 m<sup>2</sup>)  
AUDI Ternat (90 m<sup>2</sup>)  
AUDI Fosses la Ville (720 m<sup>2</sup>)  
AUDI Hasselt (2200 m<sup>2</sup>)

## **Italy**

AUDI Bolzano (facade model)  
AUDI Firenze (700 m<sup>2</sup>)  
AUDI Caserta (480 m<sup>2</sup>)  
AUDI Fornasier (510 m<sup>2</sup>)





### **Sweden**

AUDI Smista (1000 m<sup>2</sup>)  
AUDI Värnamo (500 m<sup>2</sup>)  
AUDI Uddevalla (380 m<sup>2</sup>)  
AUDI Västerås (800 m<sup>2</sup>)

### **Slovakia**

AUDI Bratislava (2400 m<sup>2</sup>)  
AUDI Zilina (350 m<sup>2</sup>)  
AUDI Trenčín (500 m<sup>2</sup>)

### **Other European countries**

AUDI Madrid, Spain\* (2200 m<sup>2</sup>)  
AUDI Dudelange, Luxemburg (500 m<sup>2</sup>)  
AUDI Prague, Czech Republic (440 m<sup>2</sup>)  
AUDI Kyjov, Czech Republic (560 m<sup>2</sup>)  
AUDI Zagreb, Croatia (1500 m<sup>2</sup>)  
AUDI Budapest, Hungary (720 m<sup>2</sup>)  
AUDI Vienna, Austria (570 m<sup>2</sup>)  
AUDI Molde, Norway (40 m<sup>2</sup>)  
AUDI Kristiansand, Norway (600 m<sup>2</sup>)  
AUDI Dübendorf, Switzerland (2100 m<sup>2</sup>)  
AUDI Horgen, Switzerland (700 m<sup>2</sup>)  
AUDI Winterthur, Switzerland (1380 m<sup>2</sup>)  
AUDI Charkow, Ukraine (550 m<sup>2</sup>)  
AUDI Lviv, Ukraine (620m<sup>2</sup>)  
AUDI Odessa, Ukraine (650 m<sup>2</sup>)  
AUDI Nass, Ireland (560 m<sup>2</sup>)  
AUDI Sligo, Ireland (500 m<sup>2</sup>)  
AUDI Waterford, Ireland (900 m<sup>2</sup>)  
AUDI Dublin, Ireland (800 m<sup>2</sup>)  
AUDI Bucarest, Romania (800m<sup>2</sup>)



AUDI Bratislava

### **Non-European countries**

AUDI Cairo, Egypt (1800 m<sup>2</sup>)  
AUDI Mexico (900 m<sup>2</sup>)  
AUDI Martinique (400 m<sup>2</sup>)  
AUDI Tunis, Tunisia (370 m<sup>2</sup>)  
AUDI Toronto, Canada (800 m<sup>2</sup>)  
AUDI Laval, Canada (700 m<sup>2</sup>)  
AUDI Calgary, Canada (850m<sup>2</sup>)  
AUDI Polokwane, South Africa (1000 m<sup>2</sup>)

Until today DF has realised the most Audi terminal projects world wide.

These projects have been realised in close cooperation with architects and responsible cladding companies. DF stuck to its core competencies - perforating, bending, anodising - and supplied this scope of delivery to the cladding companies. The substructure and assembly of the plates have so far been realised by the cladding companies or general contractors.

All projects have been carried out without any trouble to our customers' utmost satisfaction.



## Substructure

The substructure was realised by the responsible cladding companies on site; it is simple and easy to install:

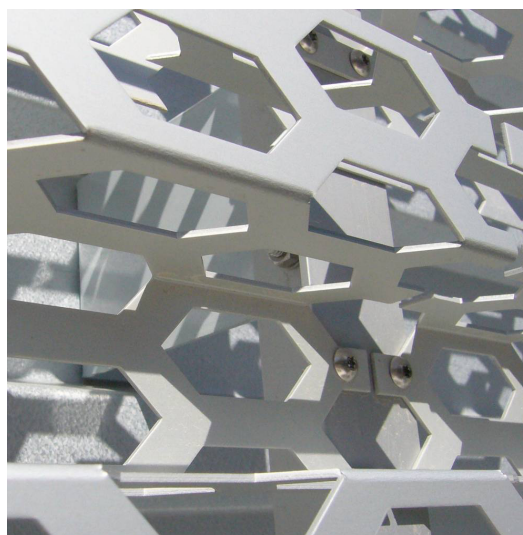
1. Screwing the aluminium sheets to the existing or newly produced substructure (corrugated sheet and/or profiled sheet).  
Screwing the perforated panels to the aluminium beams
2. Riveting aluminium profiles to the bottom plates  
Riveting the perforated plates to the aluminium beams

Depending on the planning, the screwing of the aluminium profile was carried out either on or between the corrugations of the bottom plates.

Both alternatives are checked and applicable under static aspects and offer a high degree of flexibility for adaptations on site.



Example: Substructure with screwed aluminium profile angles on bottom plate facade



Example: Perforated panel screwed on aluminium profile



Example: Aluminium profile riveted on bottom plate and perforated panel riveted on aluminium beam



## **Delivery times:**

Thanks to our company size we are able to deal with several, even bigger, AUDI terminal projects at the same time without any troubles.  
Delivery time is subjekt to availability

With already successfully realised projects and our experience we consider ourselves being your reliable and competent partner for your AUDI terminal project. We guarantee strict adherence to delivery dates and excellent quality.

We would be very glad working with you.

On the following pages, you will find some additional technical information on the perforated sheets for the AUDI terminals. If you have any questions, please contact:

Mr Patrick Wegener  
Tel: 0049 6831 7003 528  
Fax: 0049 6831 7003 525  
Mail: [pwegener@dfvertrieb.de](mailto:pwegener@dfvertrieb.de)

Mr Rached Fitouri  
Tel: 0049 6831 7003 530  
Fax: 0049 6831 7003 525  
Mail: [rfitouri@dfvertrieb.de](mailto:rfitouri@dfvertrieb.de)

DF Lochbleche GmbH & Ko KG, Franz Meguin Strasse 20, D-66763 Dillingen

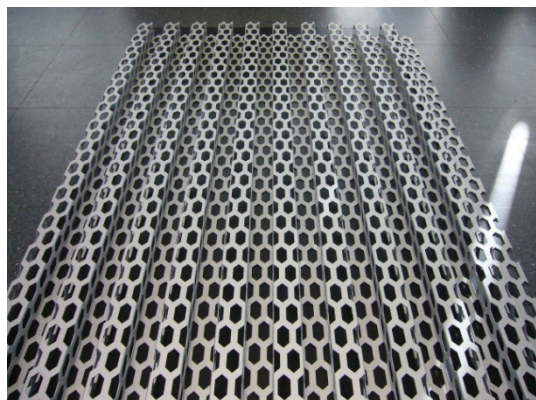
Tel: 0049 6831 7003 0  
Fax: 0049 6831 7003 525  
[www.dfgb.de](http://www.dfgb.de)  
[info@dfgb.de](mailto:info@dfgb.de)



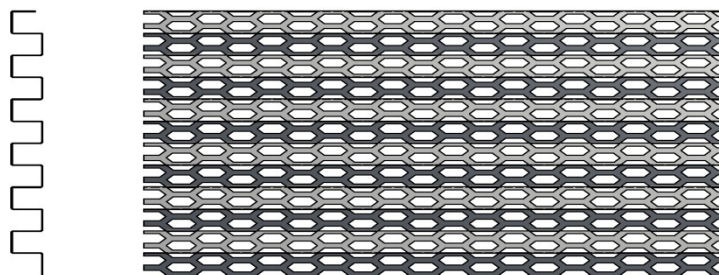


## Technical data of perforated sheets for AUDI terminal

Material:	EN AW 5005
Thickness:	2 mm
Standard dimension:	
Plate dimension:	758 x 2494 mm
Laying size:	750 x 2500 mm
Other dimensions:	acc. to measurements and drawings
Perforation:	hexagonal honeycombs 26 x 61.5 mm
Surface treatment:	anodised E 6 EV 1 layer thickness 25 $\mu$
Plate design:	perforated, bent
Bending:	
Bending axis:	62.5 mm
Edge width:	64.5 mm

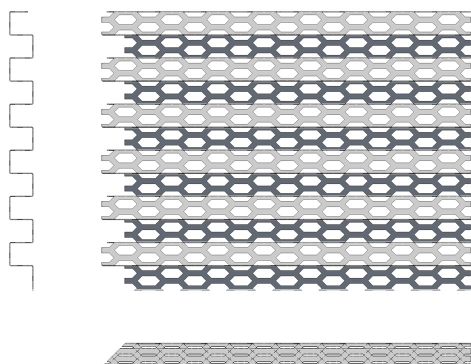


Standard panel 758 x 2494 mm

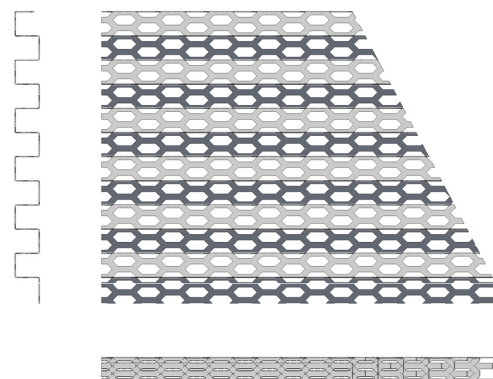


Standard panel

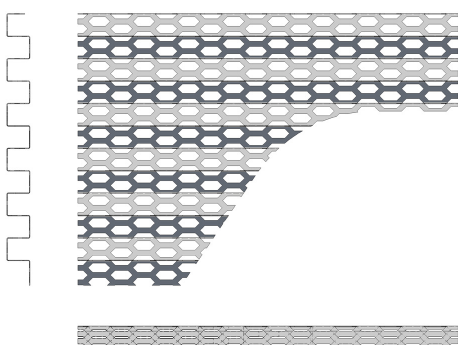
Mitre cuts for corners



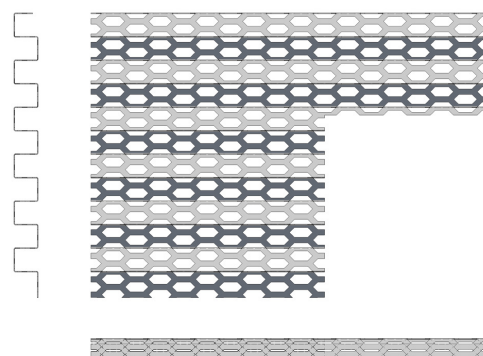
Slopes

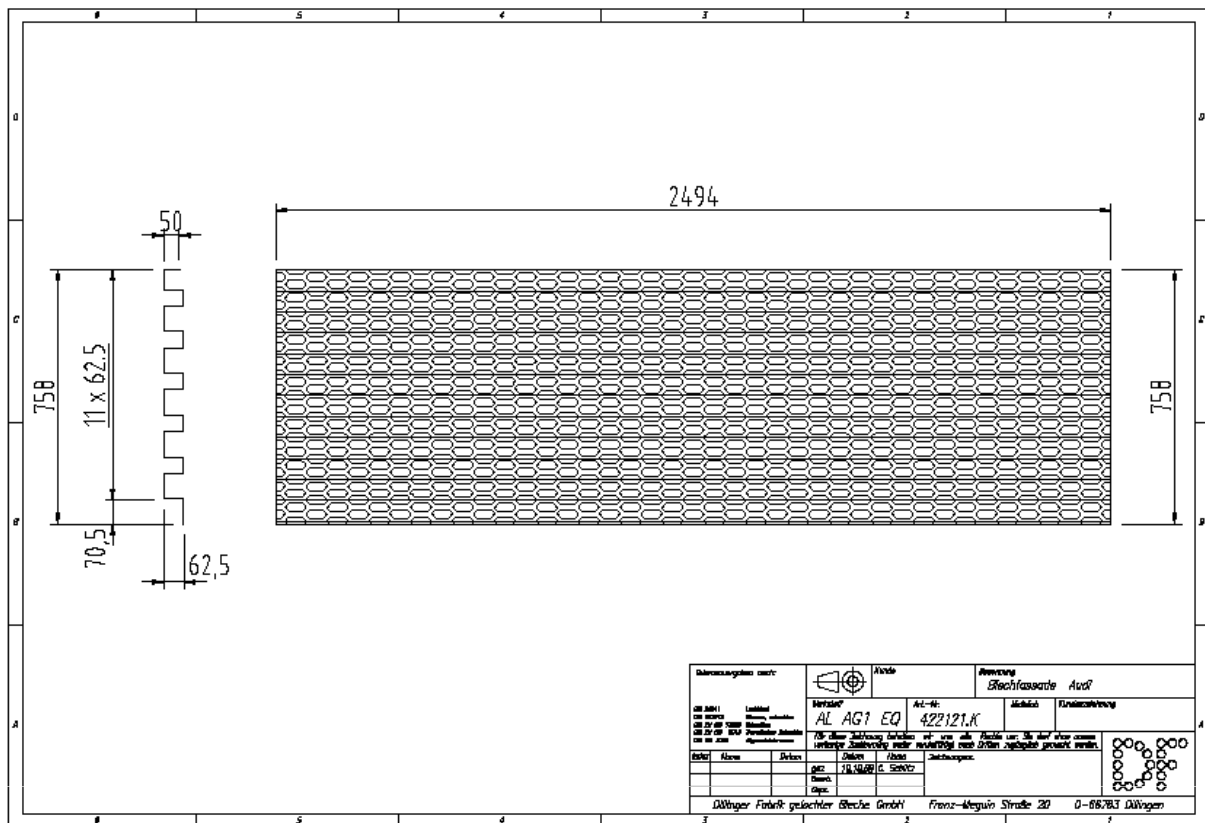


Curves



Cuts for doors, etc.





Dimensions of bent standard panel